

PHILIPS

sense **and** simplicity

Product Introduction

GreenPerform Batten

Prof Lighting Solutions
ASEAN Pacific & Japan
May 2012



GreenPerform Batten



>50%
energy
saving



Product Highlights

- High quality LED batten equivalent to a double T8/36W or T5/28W fluorescent batten
- System efficacy reaches 100lm/W, 50% energy saving compared to T8 Batten with same light level
- Integrated design, easy to install & slim
- Good color uniformity (SDCM<3.5) and color rendering (CRI>80)
- Reliable and robust housing structure, maximize the endurance over the life time
- Suitable for both direct and indirect lighting application with flexible optics and mounting accessories
- Provides for continuous line of light due to inline connector between battens, max.25 pcs in connection

PHILIPS

GreenPerform Batten



BN208C

Standalone version

Lumen output	4000/ 2000/ 1000lm
System Watt	40/ 20/ 10W
Length	1200/ 600mm
CCT	6500/ 4000/ 3000K
CRI	80
Optics	Diffused/ Clear
Mounting	Surface/ Suspension
Accessory	Mounting bracket (Sym/ Asym)
Input voltage	220-240V/50-60Hz



BN209C

Trunkable version

Lumen output	4000/ 2000lm
System Watt	40/ 20W
Length	1200mm
CCT	6500/ 4000/ 3000K
CRI	80
Optics	Diffused/ Clear
Mounting	Surface/ Suspension
Accessory	Mounting bracket (Sym/ Asym)
Input voltage	220-240V/50-60Hz
Connection	Max.25pcs

GreenPerform Batten

Philips Fortimo LP Modular
50000hrs/ CRI>80/ SDCM<3.5



SPCC housing,
0.6mm thickness

Philips Xitanium® driver
Peak design @ 50000hrs



High quality
plastic injection
end-cup

Max10A current of
inline cable

High efficient copper
thermal pad



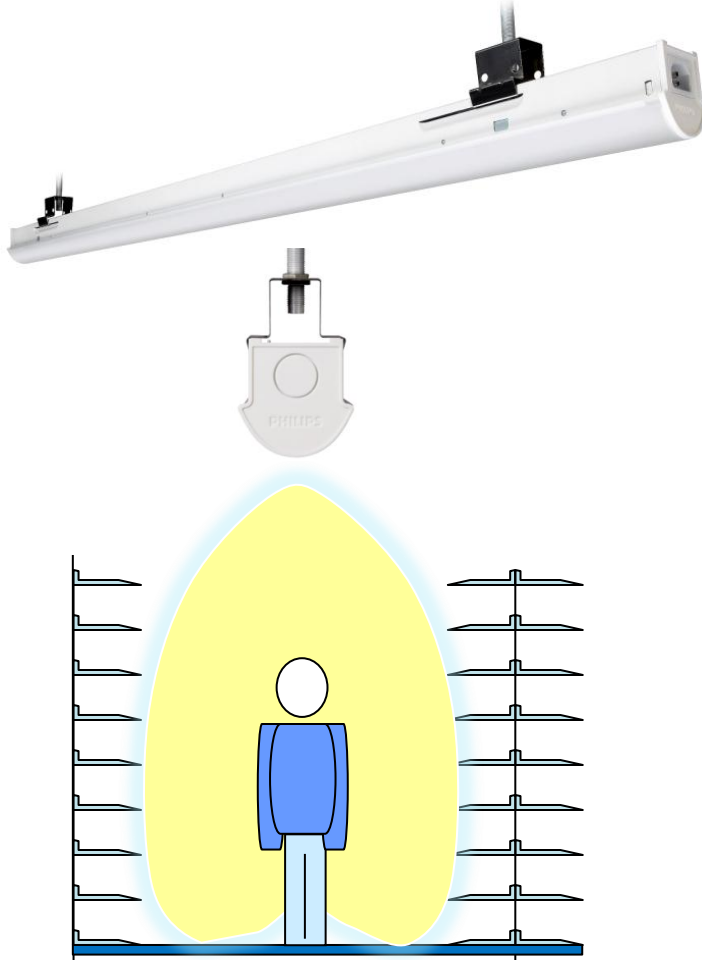
PMMA optical cover
(Diffused/ Clear)

GreenPerform Batten is built with high reliability electronic components designed for extreme long life and extreme temperature fluctuations.

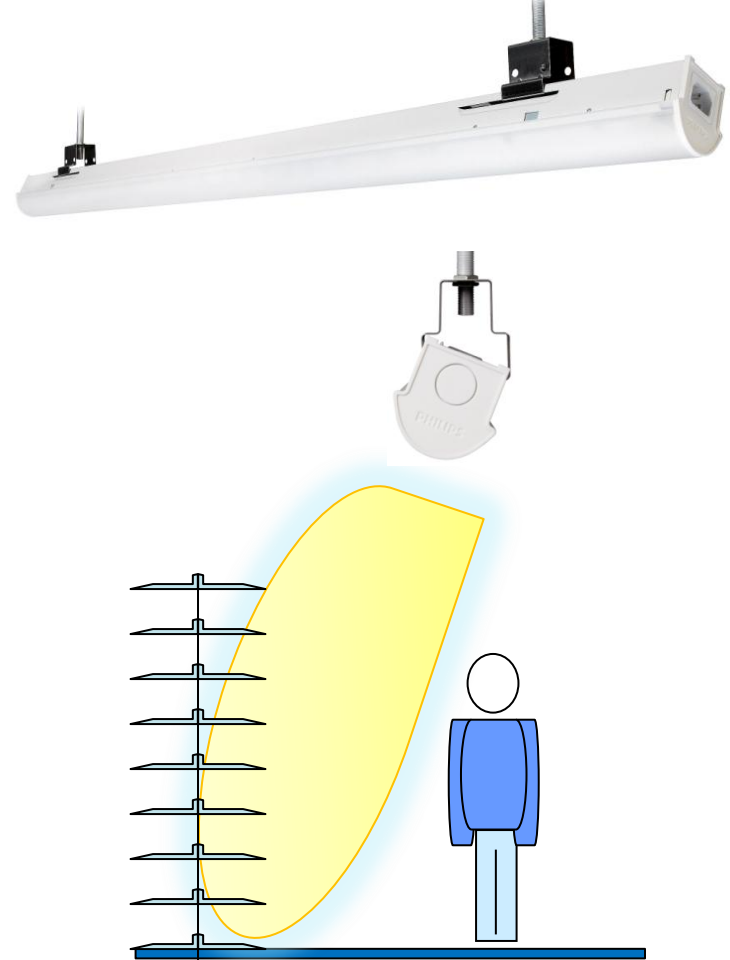
PHILIPS

GreenPerform Batten

Symmetric mounting



Asymmetric mounting



Dedicated Sym/ Asym mounting bracket for better use of light in different applications

PHILIPS

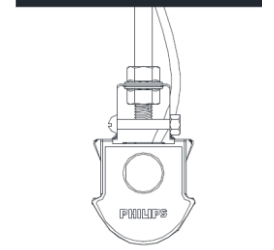
BN208C Mounting instruction



Surface (Sym)



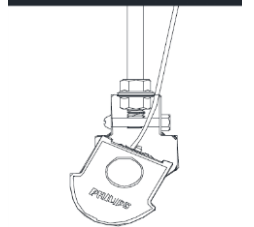
Suspension (Sym)



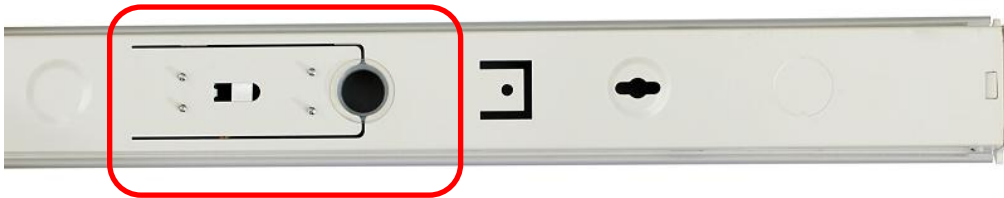
Surface (Asym)



Suspension (Asym)



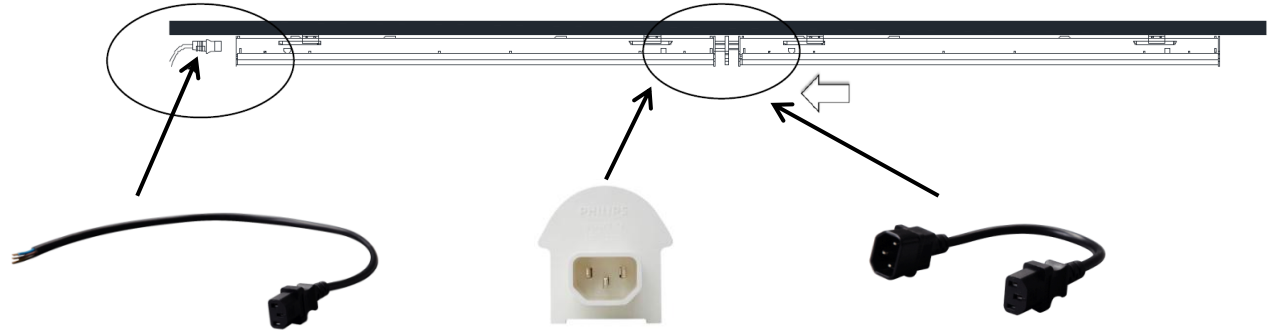
- New developed recess/ suspension mounting accessories provides both symmetric and asymmetric installation options for flexible lighting applications.



- New developed integrated terminal block for quick and easy connection, effectively prevents touching the LED chips during the installation and enhance the safety and reliability

PHILIPS

BN209C Mounting instruction



BY208Z C-2
Power cable 0.2m

BY208Z TB
Connecting block
- For rigid connection

BY208Z C600-P
Connecting cable 0.6m
- For flexible connection



New trunkable system with dedicated connecting accessories, provides for continuous line of light due to inline connector between battens, max.25 pcs in connection

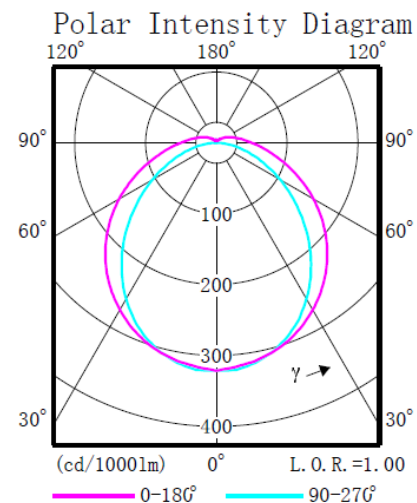
GreenPerform Batten

T8 vs. LED

Key specs	T8 System 2x36W	LED System 40W
Light source wattage	72 W	38 W
System wattage	82 W	40 W
System lumen output	4200 lm	4000 lm
System efficacy	50 lm/W	100 lm/W
Lumen maintenance at 10000hrs	85%	>95%
Lumen output at 10000hrs	3570lm	3800lm
CRI	80	>80
Color	4000K	4000K
Control & dimming	N/A	DALI (optional)
Energy saving	N/A	51%

PHILIPS Specifications

	BN208C		BN209C
Type	Standalone		Trunkable
Lumen/ Watt	4000lm/ 40W 2000lm/ 20W	2000lm/ 20W 1000lm/ 10W	4000lm/ 40W 2000lm/ 20W
Length	1.2m	0.6m	1.2m
Weight	1.7kg	0.75kg	1.8kg
Sys. Efficacy	>100lm/W		
CCT	NW (4000K) CW (6500K) WW (3000K)		
CRI	>80		
SDCM	<3.5		
Optics	Diffused/ Clear		
LED	Philips Fortimo LP modular		
Driver	Philips Xitanium® driver		
Material	Housing : 0.6mm SPCC Cover : PMMA		
IP	IP20		
Class	Class I		
Ta	35°C		
Life	50000小时 (Ta = 35°C @LM70)		
Input voltage	220-240V、50/60 Hz		



Accessories

Connecting parts (BN209C)



BY208Z TB
Connecting block



BY208Z C-2
Power cable 0.2m



BY208Z C600-P/ C200-P
Connecting cable 0.2m/ 0.6m

Surface mounting (BN208C/ 209C)



BY208Z MB-S
For symmetric installation



BY208Z MB-A
For asymmetric installation

Suspension (BN208C/ 209C)



BY209Z MB-S
For symmetric installation



BY209Z MB-A
For asymmetric installation



BY208Z SP
Suspension pole

Detail of designation codes

BN208C **LED**40 / **NW** **L**1200 **FR**

1 2 3 4 5

1 Product type

208: standalone

209: trunkable

2 System output/ Watt

LED40: 4000lm/ 40W

LED20: 2000lm/ 20W

LED10: 1000lm/ 10W

3 Color temperature

NW: 4000K

CW: 6500K

WW: 3000K

4 Length

L1200: 1.2m

L600: 0.6m

5 Optical cover

FR: diffused

S: clear



PHILIPS Ordering information

12NC	Standalone version	Lumen	CCT	Length	Cover	Watt
911401565201	BN208C LED40/NW L1200 S	4000lm	4000K	1200mm	Clear	40W
911401568401	BN208C LED40/NW L1200 FR	4000lm	4000K	1200mm	Diffused	40W
911401565501	BN208C LED20/NW L1200 S	2000lm	4000K	1200mm	Clear	20W
911401565801	BN208C LED20/NW L1200 FR	2000lm	4000K	1200mm	Diffused	20W
911401565901	BN208C LED20/NW L600 S	2000lm	4000K	600mm	Clear	20W
911401566101	BN208C LED20/NW L600 FR	2000lm	4000K	600mm	Diffused	20W
911401566401	BN208C LED10/NW L600 S	1000lm	4000K	600mm	Clear	10W
911401566601	BN208C LED10/NW L600 FR	1000lm	4000K	600mm	Diffused	10W

12NC	Trunkable version	Lumen	CCT	Length	Cover	Watt
911401566701	BN209C LED40/NW L1200 S	4000lm	4000K	1200mm	Clear	40W
911401566901	BN209C LED40/NW L1200 FR	4000lm	4000K	1200mm	Diffused	40W
911401567201	BN209C LED20/NW L1200 S	2000lm	4000K	1200mm	Clear	20W
911401567401	BN209C LED20/NW L1200 FR	2000lm	4000K	1200mm	Diffused	20W

12NC	Accessories	说明
911401567501	BY208Z MB-A	Surface mounting bracket for asymmetric installation
911401567601	BY208Z MB-S	Surface mounting bracket for symmetric installation
911401567701	BY209Z MB-A	Suspension bracket for asymmetric installation
911401567801	BY209Z MB-S	Suspension bracket for symmetric installation
911401567901	BY208Z SP	Suspension pole
911401568001	BY208Z TB	Connecting block
911401568101	BY208Z C600-P	Connecting cable 0.6m
911401568201	BY208Z C200-P	Connecting cable 0.2m
911401568301	BY208Z C-2	Power cable 0.2m

* 6500K/3000K type to be launched in July

PHILIPS

Reference replacements

- BN209C LED40/NW L1200 FR replacing TMS011 2x36W



PHILIPS

Reference replacements

- BN208C LED20/NW L1200 S replacing TMS011 1x36W



PHILIPS

Reference replacements

- BN209C LED40/NW L1200 FR replacing TTX080 2x36W



PHILIPS

Reference replacements

- BN208C LED20/NW L1200 FR replacing TMS011 1x36W



